

**THE INTERNATIONAL MAGAZINE FOR BOAT DEALERS
YACHT BROKERS & MARINE CHANDLERS WORLDWIDE**



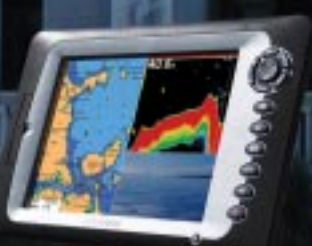
Boat Dealer & Chandler

Quarter 3 - 2006[®]

incorporating
*Yacht Broker
International*

WORLD RIB REVIEW

GEAR & GADGETS
To Stock & Sell



PROPELLERS

The latest props for high performance boats and yachts



SOUTH AFRICA

The best boats and yachts from this expanding nation



LUXURY YACHT MARKETING

Selling yachts at the top end



THE ULTIMATE WEEKENDER?

Cruise Craft's 'Executive 700'



INSIDE-A-DEALER

The Berthon Group. One of Europe's biggest dealers



TRANSPACIFIC



Designed in the Pacific Northwest and built in China, Transpacific Marine's 'Eagle 53' is a luxurious, seaworthy yacht, with a performance to match.

Eagle 53

Transpacific Marine's elegant trawler yachts have long been favourites in the American Northwest, their classic lines, seaworthy hull designs and beautiful custom interiors, proving an irresistible match.

The flagship of the fleet, the 'Eagle 53' is no slouch though. Fitted with twin 230hp Cummins electronic diesels as standard, the 'Eagle 53' offers a cruising speed of 10 knots with a range of about 700 miles. Larger engine packages including twin 450hp Cummins diesels are available for buyers wanting 20+ knots speed.

Based upon proven Pacific Northwest trawler designs, the hull construction is of solid hand

laid vinyl ester resin fibreglass, while above the waterline it is Nila honeycomb cored to save weight, thus improving stability and performance.

In keeping with the custom design, a choice of two or three stateroom versions are offered. In the standard two stateroom version, which is the more preferred layout, the master stateroom amidships boasts a queen sized island berth with en-suite bathroom and walk-in closet. Both the master and guest stateroom (which also comes with a queen sized bed) offer excellent storage, with an abundance of lockers and drawers, to cope with heavy luggage demands for the times when long voyages are planned.



Master Stateroom



Spacious above and below deck



Eagle 53 Cruising



Above Top: Eagle 53 Flybridge
Above: Salon looking aft
Below: The luxurious dining area



Eagle 53 Specifications:

- LOA: 16.25m / 53' 3"
- Beam: 4.85m / 15' 9"
- Draft: 1.25m / 4' 10"
- Displ: 20 t / 42,000 lbs
- Fuel: 3100 L / 830 US gal
- Water: 950L / 250 US gal
- Engines: 2 x 230hp Electronic QSB 59m
- Speed: 10 knots (cruising)
- Range: 700 nm (approx)

The salon and galley are exceptional and beyond what one would normally see on a yacht of this size. Both are well laid out, beautifully finished with high quality joinery and most importantly, spacious.

The pilothouse is equipped with large visible control panels where all the very latest navigation and communication equipment can be mounted with room to spare. The helmsman is well treated, with a great view through the seven large safety glass windows and a seat which is both luxurious and functional. In keeping with the 'small ship' feel, the exterior walkways are wide and perfect for dolphin and whale watching or perhaps spotting icebergs if you become extra adventurous!

And believe you me, this is a boat where owners feel like being adventurous and who know they have a boat to match their ambitions.

Together with its smaller sister, the 'Eagle 40' (see opposite), Transpacific Marine have a range of yachts which will be in constant demand and which will sell well in any market.

Dealers and distributors are sought in several regions.

For further details on availability, please contact

Transpacific Marine at:

- Tel: +886 2 2618 3621
- Fax: +886 2 2618 1885
- Email: transpac@ms2.hinet.net
- W: www.transpacificmarine.com

**Transpacific Marine
'Eagle 40'**



The Eagle 40, like her larger sister, is based upon proven Pacific Northwest trawler design. Her modern semi-displacement GRP hull offers superb seakeeping abilities, responsive handling, security and safety, whether at anchor or in rough seas.

Built and finished to the same high standards as the Eagle 53, with exquisite joinery as standard, The Eagle 40 has optional single or double stateroom layouts and is powered by a single 230hp Cummins electronic diesel as standard, providing an economical cruising speed of 8 knots. For increased performance optional larger single or twin engine versions up to 350hp can be installed.

Eagle 40 Specifications:

- LOA: 12.40m / 40' 6"
- Beam: 4.45m / 14' 6"
- Draft: 1.40m / 4' 6"
- Displ: 12.7 t / 28,000 lbs
- Fuel: 1670 L / 440 US gal
- Water: 830L / 220 US gal
- Engines: 230-350hp
- Speed: 8.5 knots (cruising)
- Range: 900 nm (approx)



Regal Eagle



Combining ocean going seakeeping qualities with luxuriously appointed interiors and real performance, Transpacific Marine present the 'Eagle' range of yachts.

Dealers and Distributors required in several regions.
For further information, please contact:

Transpacific Marine Co. Ltd

Pali Lung Shing
P.O.Box 14
Taipei 24946
Taiwan, R.O.C.
Tel: +886 2 2618 3621
Fax: +886 2 2618 1885
Email: transpac@ms2.hinet.net
Web: <http://www.transpacificmarine.com>